

---

# Development aid to maternal, newborn and child health, 2003-2010

Justine Hsu

Countdown to 2015 Financing Working Group  
London School of Hygiene and Tropical Medicine

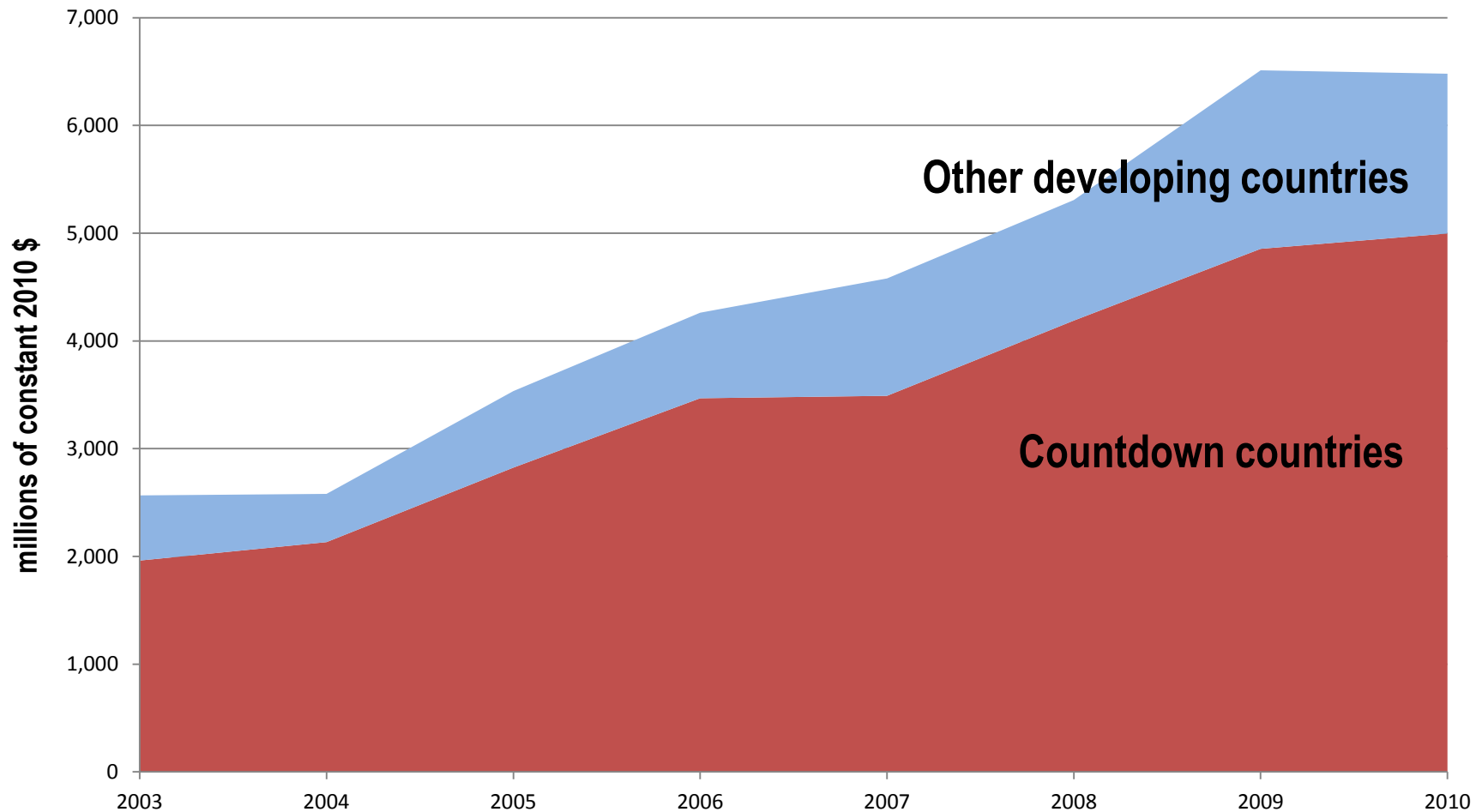
# Tracking aid flows to maternal, newborn & child health

---

- Why are we tracking?
- How are we tracking?
- Who are we tracking?

# Aid flows to maternal, newborn & child health, 2003-2010

## Losing momentum?

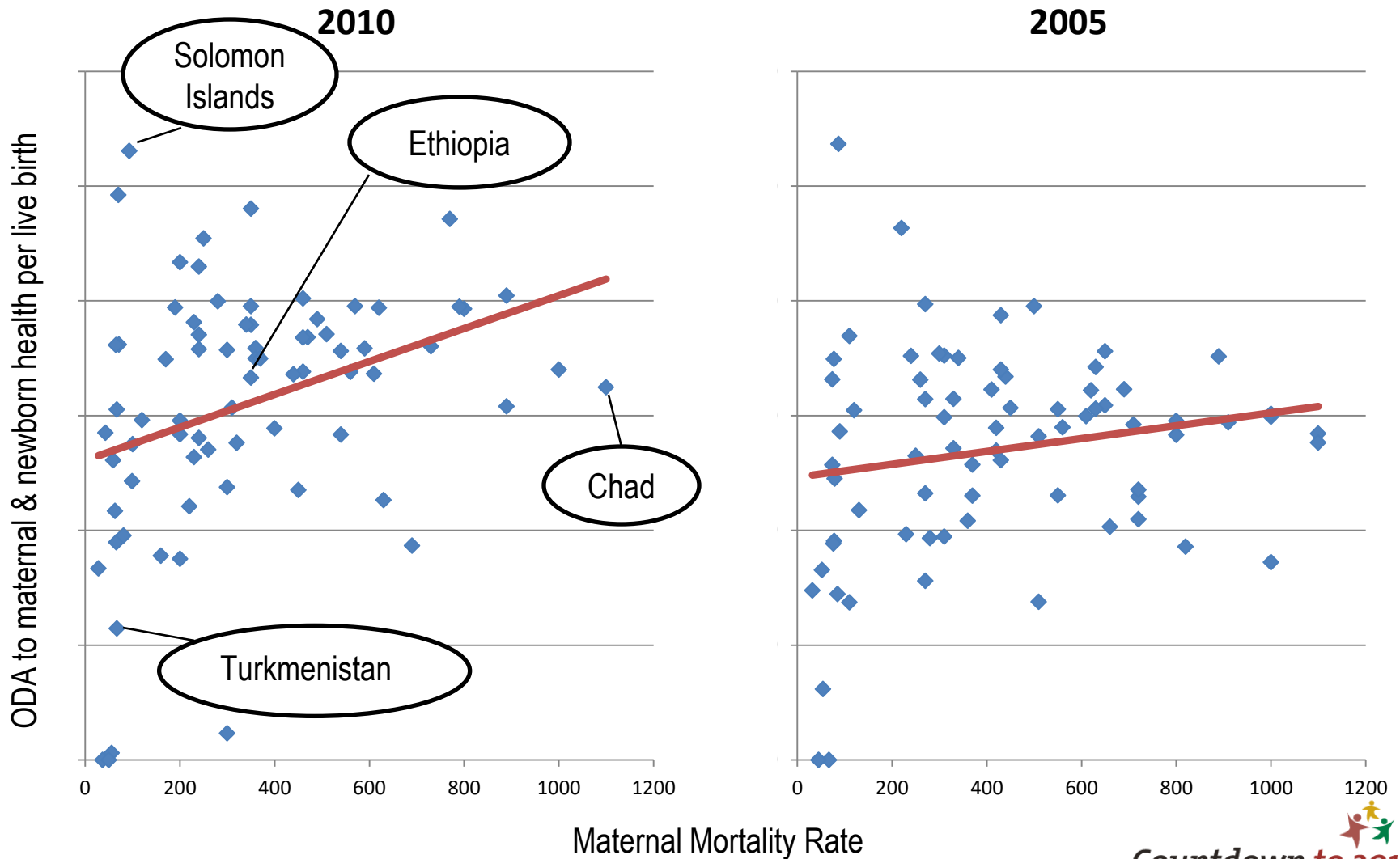


# Aid flows to maternal, newborn & child health, 2003-2010

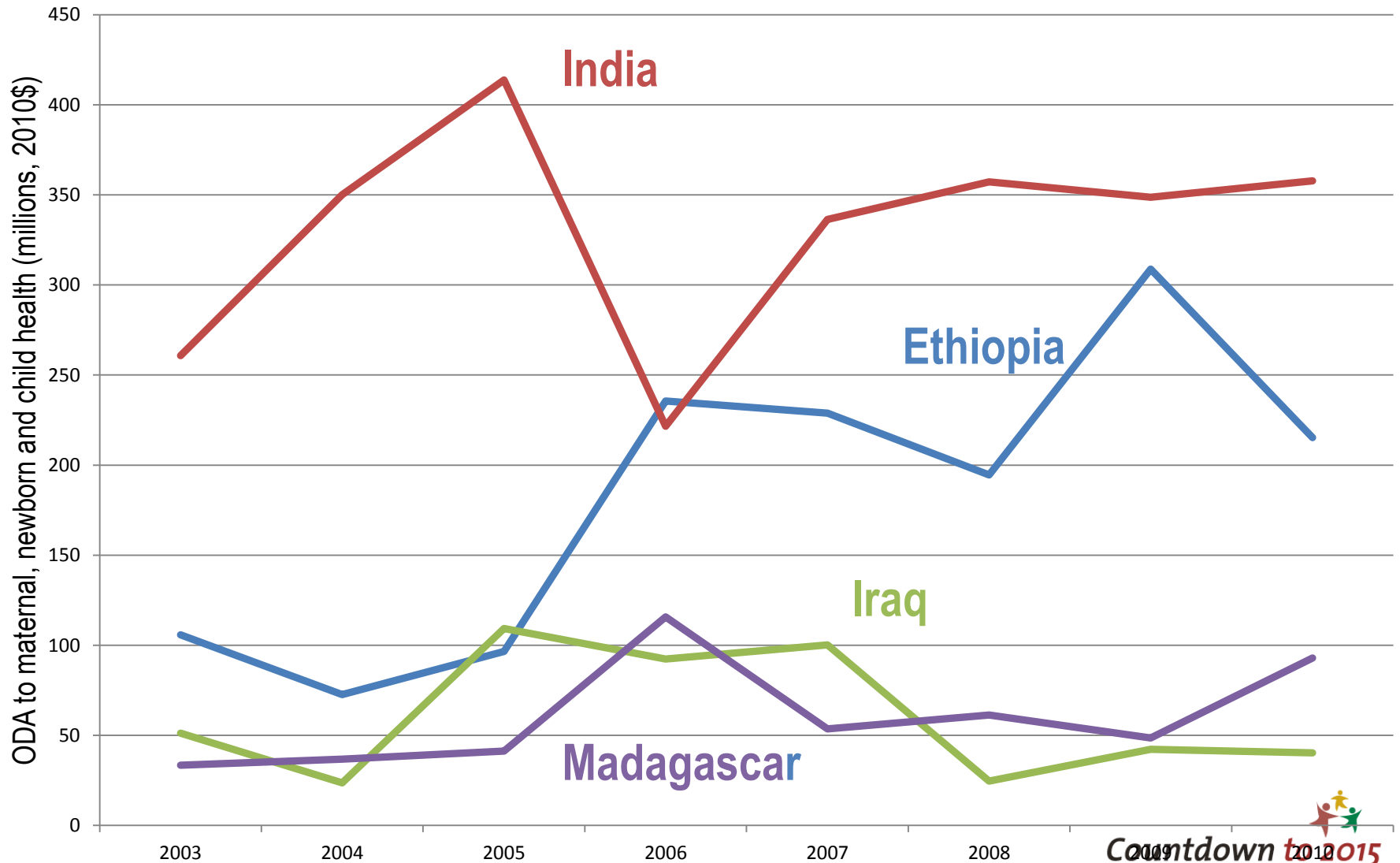
## Losing momentum?

	2003	2004	2005	2006	2007	2008	2009	2010
<b>WORLDWIDE</b>								
All ODA*	75,387	83,029	98,305	110,602	106,414	119,737	132,360	138,935
Rate of increase /decrease		10%	18%	13%	-4%	13%	11%	5%
ODA CH	1,673	1,875	2,251	2,818	3,054	3,684	4,394	4,442
ODA MNCH	893	705	1,283	1,443	1,525	1,623	2,117	2,037
ODA MNCH (% all ODA)	2,566 (3%)	2,580 (3%)	3,534 (4%)	4,262 (4%)	4,579 (4%)	5,307 (4%)	6,511 (5%)	6,480 (5%)
Rate of increase /decrease		1%	37%	21%	8%	16%	23%	-0.5%
<b>COUNTDOWN PRIORITY COUNTRIES</b>								
ODA CH	1,340	1,568	1,855	2,345	2,363	2,905	3,398	3,485
ODA MNH	621	564	969	1,123	1,127	1,284	1,456	1,512
<b>ODA MNCH</b>	<b>1,961</b>	<b>2,132</b>	<b>2,824</b>	<b>3,468</b>	<b>3,490</b>	<b>4,189</b>	<b>4,855</b>	<b>4,997</b>
Rate of increase /decrease		9%	32%	23%	1%	20%	16%	3%
* Exc. Debt forgiveness								

# Targeting of aid flows



# Volatility of aid flows



# Investing in maternal, newborn & child health

---

- Prioritise maternal, newborn & child health in country plans
- Coordinate aid via country compacts
- Adopt an investment approach

---

*“Tracking resources and results of public health spending are critical for transparency, credibility and ensuring that much needed funds are used for their intended purposes and to reach those who need them most”*

Jakaya Kikwete, President of the United Republic of Tanzania  
Co-Chair of the Commission on Information & Accountability for  
Women’s and Children’s Health